



Mobile POS
/ Retail



Deliveries



Parking Citations



Hospitality



Compact yet Rugged

SPP-R200

BIXOLON SPP-R200, a small and lightweight mobile receipt printer. A prudent choice for any mobile receipt printing application where you need fast, on-demand printing with speeds up to 80mm per second (3.15inches/sec). The SPP-R200 also utilizes a long-life Lithium-ion battery with a 8 hour continuous operation life. The magnetic card reader integrated into the printer allows credit cards to be processed immediately at the point of transaction, increasing customers' sense of security since the credit card does not leave their sight.

HIGHLIGHTS

- Rugged design and small size
 - Damage-resistance to multiple drops of up to 1.2 meters (4 feet)
 - Rubber over-molding
- Faster printing speeds-up to 80mm per second
- Long lasting Lithium-ion battery (7.4V, 1200mAh)
 - Operation: 8 hours
 - Stand-by: 14 hours
- Customer oriented software tools
 - Firmware download tool (with cable or without cable)
 - Bluetooth firmware download tool
 - Font download tool (Virtual Memory Switch Manager)
 - NV Image tool (Logo download)
- Easy-to-use
 - One touch cover open and easy paper loading
 - 4 step battery indicator and connectivity status
- Magnetic Stripe Reader (MSR)
 - One touch open (Patent applied)
 - All track conditions supported by Virtual Memory Switch Manager
 - Single track (1st or 2nd or 3rd),
 - Dual track (1st/2nd track or 2nd/3rd track)
 - Triple track (1st/2nd/3rd track)
- Smart Card Reader (SCR)
 - Contact type

OTHER VALUE-ADDED FEATURES

- Various Interface communication and interface capabilities
 - Serial/USB - Bluetooth with high communication speed (115,200 bps)
- Intuitive LEDs
- Portable device suited for outdoor usage
 - Belt Strap (standard) - Leather Case (Optional)
- 30 code pages included in the standard firmware (no update necessary, to be set by VMSSM)
- 203 dpi printing
- Selectable color of hinge (Orange/Black)
- Software development kit / Windows driver / OPOS driver / Windows CE driver supported



SPP-R200

SPP-R200M (with MSR)

SPP-R200S (with SCR)

PRODUCT FEATURES

Rugged Design and Small Size

Uniquely designed for harsh outdoor environments, and handheld size, the SPP-R200 is ideal for printing delivery receipts and invoices on the go.

Damage-resistance material
Rubber over-molding

Handheld size

Fast Printing Speed

To speed up customer transactions without sacrificing performance, the SPP-R200 prints texts and graphics at a consistent speed of 80mm per second. Reduced data processing time has been achieved by utilizing a more powerful CPU; increases in performance have been made by upgrading mechanical components and optimizing software.

- CPU : 32 bit
- Flash Memory : 16 Mbit (NV Image: 256KBytes)
- RAM : 64 Mbit (SDRAM)
- Buffer : 128 KByte

Long lasting Lithium-ion Battery (7.4V 1,200mAh)

The SPP-R200 utilizes a long-life lithium-ion battery with a 8 hours operation life of 203 dpi (8dots/mm) thermal printing on a single charger.

- Operation hours: 8 hours
- Standby hours: 14 hours

Magnetic Stripe Reader (MSR) and Smart Card Reader (SCR)

The Magnetic card reader and Smart card reader integrated into the printer allows credit cards to be processed immediately at the point of transaction, increasing the customers' sense of security since the credit card does not leave their sight.



Magnetic Strip Reader(MSR)

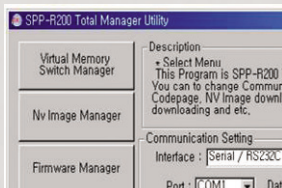


Smart Card Reader (SCR)

- One touch open (Patent applied) : SPP-R200M
- Triple (Track 1-2-3) track supported (Standard) : SPP-R200M
- Contact type of Smart Card Reader (SCR) : SPP-R200S

User-friendly Software Tools

The SPP-R200 is supported by a rich pool of utility software. The Firmware download tool, NV image tool and Virtual Memory Switch Manager (VMSM) are available with more software being added in the future. These new customer oriented utilities enable the users to directly access logo download, code page selection, firmware download and the other printer settings more selection, firmware download and the other printer settings more.



SPECIFICATIONS

PRINT

- PRINT METHOD : Direct thermal
- PRINT SPEED : 80 mm/sec
- RESOLUTION : 203 dpi (8 dots/mm)
- PAPER SUPPLY METHOD : Easy paper loading
- CHARACTER SIZE : Font A : 12 x 24 , Font B : 9 X 24,
Korean : 24 X 24, Chinese : 24 X 24
- CHARACTER PER LINE : Font A : 32, Font B : 42,
Korean : 16, Chinese : 16
- CHARACTER SETS : Alphanumeric character : 95
Extended character : 128 x 30 pages
(included in the standard firmware)
International character : 32

BARCODES

- 1D : Codabar, ITF, UPC-A, UPC-E, Code 39, Code 93,
Code 128, EAN-8, EAN-13
- 2D : QR Code, Maxi Code, PDF417, Data Matrix

DRIVER : Software development kit / Windows driver /
OPOS driver / Windows CE driver supported

SENSOR : Paper end sensor, Paper cover open sensor

PAPER

- PAPER WIDTH : 58 ± 0.5 mm (2.28" ± 0.2")
- PAPER ROLL DIAMETER : Max. ø40 mm (1.57")

RELIABILITY

- PRINTER UNIT : 35 million lines
- TPH : 120 km
- BATTERY : 500 cycles rechargeable

INTERFACE : Serial/USB, Bluetooth

BATTERY CHARGER

- INPUT : Voltage - AC 100~250V /Current - 1.0A (Max. at 110VA)
- OUTPUT : Voltage - DC 8.4V/Current - 0.8A

OPERATING TEMPERATURE

- PRINTER : -10~50°C (14~122°F)
- BATTERY : 0~40°C(32~104°F)

OPERATING HUMIDITY

- PRINTER : 10~80% RH, Non-Condensing

BATTERY

- TYPE : Lithium-ion
- OUTPUT : Voltage - 7.4 VDC/Capacity - 1200 mAh

DIMENSION

- PRINTER : 79.5 mm x 126.7 mm x 43.6 mm (3.1" x 5.0" x 1.7")

WEIGHT

- PRINTER : 184g (0.41lbs)
- PRINTER+BATTERY : 236g (0.52lbs)
- PRINTER+BATTERY+PAPER ROLL : 293g (0.65lbs)
- SHIPPING : Approximately 680g (1.5lbs)

OPTION

- STANDARD (included in box)
Battery, Battery Charger, Belt Strap, Installation CD,
Roll Paper
- OPTIONAL
- BATTERY CRADLE (PBD-R200)
- CIGARETTE LIGHTER JACK CHARGER (PCC-R200)
- LEATHER CASE (PLC-R200)
- SERIAL/USB INTERFACE CABLE (PIC-R200S/PIC-R200U)
- QUAD CHARGER (PQC-R200)